



HXP100DIP

Single Phase Two Wire
DIN-Rail Split
Prepayment Meter

Focus on creating value for clients



HXP100DIP

HXP100DIP is a single phase two wire residential DIN-rail split prepayment meter, it complies with open standard (STS) and supported by Hexing/Itron /Landis+Gyr/Conlog...’s vending system. With a PLC communication, it can used for energy consumption monitoring and credit charging.

Main functionalities

Measurement

- Unidirectional or Bi-directional Measurement
- Record active energy and reactive energy
- Instantaneous value measurement

Instantaneous Values

- Power
- Voltage
- Current
- Power factor
- Grid frequency

Power Quality Monitoring

- Under & Over voltage
- Power off

RTC (Real Time Clock)

- Clock accuracy (daily deviation): $\leq 0.5s$ (23°C), IEC 62054-21
- Daylight saving time configurable

Billing Data

- 12-month billing data for inquiry
- 62-day billing data for inquiry
- Automatic reset/ Manual reset
-

Local access

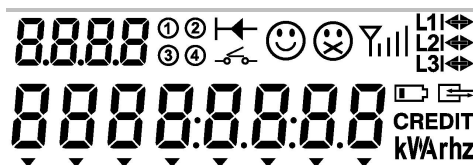
- PC software

Events & Alarm

- Power grid events
- Tamper events
- Relay events
- Fraud protection function
- Alarms indicator (LED/LCD)
- Log events with date and time

LCD (on CIU)

- Size of the screen: 67.5mm x 21mm
- Size of the characters: 5mm x10mm
- The LCD display consists of HTN material
- Working temperature range : -30°C to +80°C
- High contrast display
- Wide view angle
- Anti-UV function
- Backlight (optional)
- Test mode



Communication

- Optical port : DLMS(IEC62056-21 E)
- MC171 Communication port (optional) :DLMS(HDLC)
- PLC alternative: HX645

Anti-Tamper

- Optical port
- HHU
- Metrology data protection
- Data access management for all ports

Load Profile (optional)

- Up to 8 channels
- Configurable capturing period (15, 30, 60 ...1440 min)
- Data for load profile record configurable

TOU (Tariff Of Use, optional)

- Single tariff
- TOU
- Step configurable

- Meter Cover open detection and record(optional)
- Meter terminal detection and record(optional)
- Strong magnet field detection and record(optional)

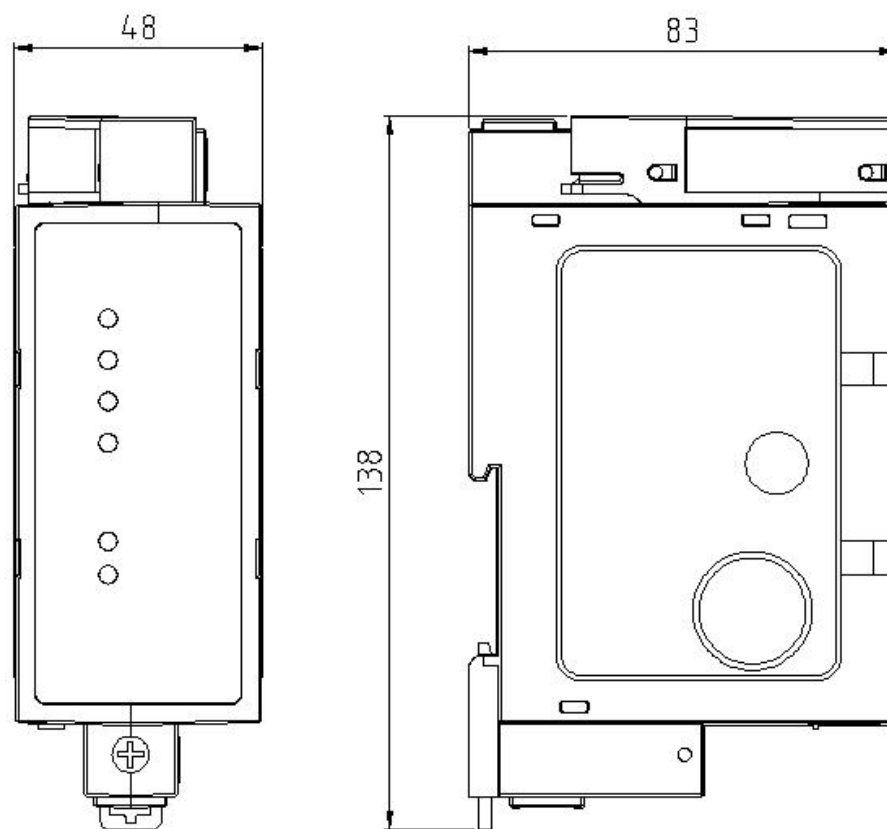
Demand Monitoring (optional)

- Block or slide mode configurable
- Programmable integration period (typically 5, 10, 15, 30 or 60 minutes)
- Forward and reverse active MD with time
- Pre-set time (automatic) /Manual reset (button/communication)

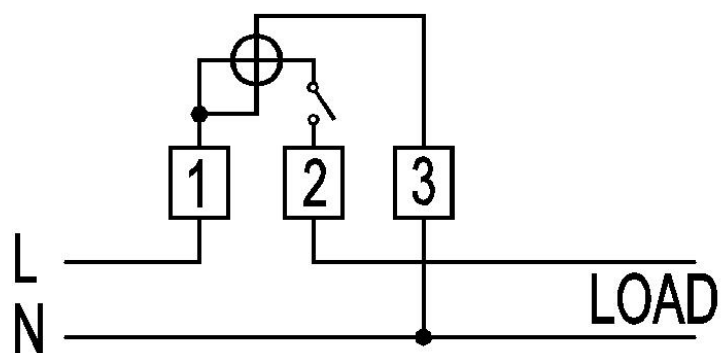
Specifications

Application		Direct connection
Accuracy	Active	Class 1 or 2 (IEC), Class A or B (MID)
Voltage	Reference voltage	110-127V,220-240V
	Operating voltage range	70%-120%Un
Current	Basic current	5A,10A
	Maximum current	60A, 80A, 100A
	Starting current	≤0.4%Ib
Frequency		50Hz or 60Hz
Temperature	Operation range	-25℃~55℃
	Limit range for storage and transport	-40℃~70℃
Humidity		Up to 95% non-condensing
Power Consumption	Power consumption in voltage circuit (active)	≤2 W
	Power consumption in voltage circuit (apparent)	≤10 VA
	Power consumption in current circuit	≤1 VA
Insulation Strength	AC voltage test	4kV during 1min
	Impulse voltage test	1.2/50μs mains connections 6kV
EMC	Electrostatic discharges(Contact discharges)	8kV
	Electrostatic discharges(Air discharges)	15kV
	Surge immunity test	4kV
	Fast transient burst test	4kV
	Electromagnetic RF fields (80MHz to 2000MHz)	10V/m(with current), 30V/m(without current)
Connection Terminals		∅ 10mm
Housing	Protection degree	IP51
	Meter cover	Opaque PC+ glass fiber with a transparent window
	Meter base	Opaque PC+ glass fiber
Communication Interface	Optical communication	DLMS/COSEM
	PLC alternative	HX645
Weight	Net weight	Approx.0.31kg
	Package	Approx.0.08kg
Dimension		138mm×83mm×48mm
Standard		IEC62052-11, IEC62053-21, IEC62055-41, IEC62055-51, IEC62056-21, IEC62056-46, IEC62056-53, IEC62056-61, IEC62056-62, EN50470-1, EN50470-3

■ Dimensions



■ Connection Diagram



COMPANY HEADQUARTERS

Add: 1418-5 Moganshan Road,
Shangcheng Industrial Zone, 310011,
Hangzhou City, China

Tel: 86 571 28029898

Fax: 86 571 28029258

To realize a sustainable future, start here

www.hxgroup.cn